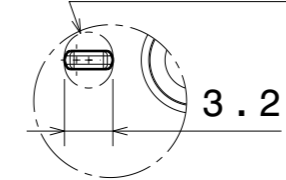
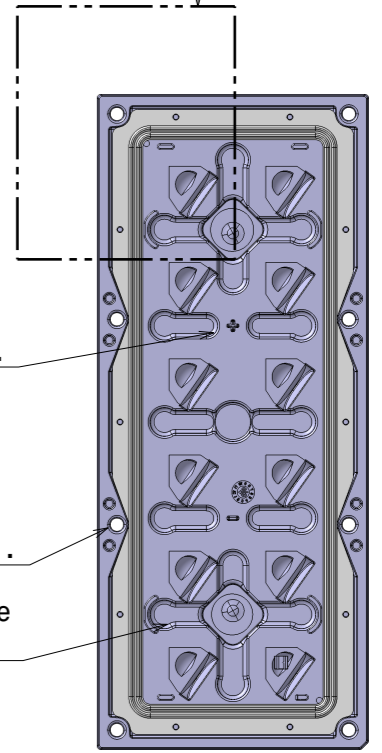


Det B
2:1
Elongated pcb hole shape recommended for this location pin



Det A
2:1

Light pattern direction



Location pin 2pcs, need cut out to pcb.

M3 screw recommended for fixing. Use max 0.6Nm torque.

Max 45x 146mm size pcb recommended

$\varnothing 3.45$
x8

PART	TYPE	MATERIAL	COLOR / COATING
C14018_2X6-SEAL25	Seal	Silicone	Milky
C18528_STRADA-IP-2X6-PXL	Lens	Pmma	Clear
CS18529_STRADA-IP-2X6-PXL	Assy		

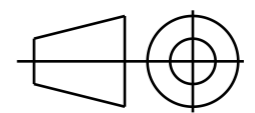
MECHANICAL DRAWING

PRODUCT
Strada-IP

LEDiL

Plastic moulding general tolerances according to DIN 16901-130 and applies if not otherwise shown in the drawing. Silicone moulding general tolerances according to ISO 3302-1 Class M3 and applies if not otherwise shown in the drawing.

FIRST ANGLE PROJECTION:



This drawing is the property of LEDiL Oy. It may not be copied or otherwise distributed without prior written permission from LEDiL Oy.

SCALE	1:1	WEIGHT	-	A3	SHEET 1/1
-------	-----	--------	---	----	-----------

- Notes**
- PCB level.
 - LED location
 - Ensure LED fitting from a product specific 3D model available from www.ledil.com
 - For more details about installation please see LEDiL Installation Guide on www.ledil.com